



LOCAL OPTIONS FOR COMMUNITIES TO ADAPT AND TECHNOLOGIES TO ENHANCE CAPACITY (LOCATE)

....to design and implement Community Based Adaptation (CBA) Project to Climate Change



Mozaharul Alam

Research Fellow, Bangladesh Centre for Advanced Studies (BCAS), and
International Fellow, International Institute for Environment and
Development (IIED), UK

Adaptation to Climate Change

- Adaptation to adverse impacts of climate change is unavoidable even a significant reduction of greenhouse gas reduction in future;
- Climate change impacts will be greater, both spatially and socio-economically, in poor and disadvantaged communities;
- Studies have shown successful community-based resource management can potentially enhance the resilience of communities;
- Need engagement of different stakeholders and community groups in planning, designing, implementing and monitoring community based adaptation project;
- Need flexible approaches as capacity of different stakeholder and information vary across the nation, region, sectors

- Several frameworks, methodologies and tools have emerged overtime for assessment of impacts, vulnerabilities and adaptation;
- Focus of the assessment has gradually moved from impacts to vulnerability and then adaptation;
- Different types of methodologies and tools are also being used by disaster risk reduction community;
- Screening existing development project for integrating climate change;
- Many of the frameworks, methodologies and tools overlap with one another;
- Application varies by purposes, geographical scale, target communities and stakeholders;

About LOCATE

- LOCATE suggested a systematic approach for designing community based adaptation to climate change based on SSNAPP;
- The entry point of LOCATE is context specificity of adaptation and designing community based adaptation to climate change;
- LOCATE is not to review existing projects and how to make them climate resilient or how to take benefits for adaptation to climate change;
- The framework used key concept and elements of Sustainable Livelihood Framework;
- However, it gave emphasis on relationship between different income streams of different communities and impacts of climate change on those streams while assessing vulnerability and adaptation needs;
- The four phases suggested in the framework support the generic steps suggested in the third assessment report of the IPCC (IPCC, 2001)

Key Concepts

- Vulnerability **and** Adaptation **to** Climate Change;
- Vulnerable communities **and** poor and marginalized;
- Find, design, implement and evaluate project and its benefit.



- **Climate Change: Top-down**
 - UNFCCC
 - IPCC Assessment Reports – Climate change scenarios
 - Regional Level Impact Assessment Report
 - Country Level Impact, vulnerability and adaptation Assessment Report
 - National Adaptation Programme of Action (NAPA)
 - National Development Plan

■ Vulnerability and Adaptation

- Vulnerability to Climate (variability and shocks)
 - Erratic behaviour of climate (rainfall and temperature), and shocks (flood, drought, cyclone and storm surges, heat stress) etc.
 - Climate Change Vulnerability (trend) if available at local level
- Adaptation to current and past climate (variability and shocks)
 - Existing including indigenous and endogenous coping strategies and mechanism
- What is necessary for future change (variability, shocks and trend)

Disaggregating Parameters for Analysis

■ Vulnerable communities

- Poverty Mapping (National, Sub-national etc,) as representation of poor and marginalized
- Disaggregated poverty analysis (social, occupational, gender)
- Poor People living in climate vulnerable areas

■ Addressing Poverty

- Ongoing Development Activities related to poverty alleviation (national, sub-national, local, and community level)

Four Phases

- I. Finding Vulnerability “Hot-spots” and “Project Owner” for implementation
- II. Project Design
- III. Implementation ■
- IV. Monitoring and Evaluation

I.a. Identification of hot-spots: Quantitative Assessment – Top-down

Key Questions

- What are the vulnerability context?
- What are the vulnerable sectors?
- Where most poor and marginalized community live?

Key Tasks

- Identification and mapping physical vulnerability context
- Mapping distribution of income poverty
- Overlaying vulnerability and poverty database

Tools

- Geographic information system (computer aided or manual)
- Relational database (computer and manual)



Initially identified Hot-spots (regional/local level), physical vulnerability and poverty is high

I.b. Confirmation of hot-spots and possibility: Qualitative Assessment – Bottom-up

Key Questions

- What is the level of concentration of different livelihood groups, e.g. farmer, share-cropper, fisherman, wage labour, etc?
- Where poor and marginalized communities are living?
- What information is available on local climate variability/climate change?
- What types of development, livelihood, disaster management activities are going on?
- Are there opportunities for adaptation projects?
- What types of adaptation activities can be designed at community level?

Key Tasks

- Cross checking and validation of findings from top-down assessment
- Collection of climate and development related data and information
- Conceptualization of possible projects

Tools

- Field observation and reconnaissance
- Meeting with local community and different organizations



Confirmed Hot-spots (vulnerable community and villages)
Long list of “eligible” or “potential” projects

I.c. Identification of Project Owner: Qualitative Assessment – Bottom-up

Key Questions

- Who is doing what and who knows what?
- Who is implementing what types of development, livelihood, disaster management activities on the ground?
- Is there interest to work on climate change adaptation?

Key Tasks

- Assessment of credibility and willingness of local level organization
- Assessment of relationship of organizations with communities
- Assessment of capability to deliver
- Assessment of relationship with funding agency and capability to raise fund

Tools

- Meeting with NGOs/CBOs
- Field visit programme/activities of the organizations



List of “Credible and Interested” NGOs and CBOs

Phase I: Finding Vulnerability “Hot-spots” and “Project Owner” for implementation

Summary Outputs of Phase I

Confirmed Hot-spots (vulnerable community and villages)
Long list of “eligible” or “potential” projects

List of “Credible and Interested” NGOs and CBOs

Inputs for Design Phase
Confirmed Hot-spots (vulnerable community and villages)
Long list of “eligible” or “potential” projects
List of “Credible and Interested” NGOs and CBOs

II.a. Development of Project Idea Note (PIN) – Based on Phase I outputs

Key Questions

- Which physical vulnerability context will be addressed (e.g. flood, cyclone, salinity, drought etc.)
- Which vulnerable groups and sector will be addressed (e.g. agriculture, water, fisheries, energy etc.?)
- Who would be potential project owners?
- How to prioritize and rank PINs or integrate activities. ■

Key Tasks

- Prioritize adaptation activities and partners based on criteria
- Develop Project Idea Notes using format
- Ranking PINs
- Sharing PINs with potential donors

Tools

- Selection criteria (see criteria list)
- Format of the PINs (see format)
- Brainstorming among team members
- Sharing proposed adaptation activities with potential NGOs and CBOs for their feedback
- Use SWOT for analysing activities and benefit
- Meeting with potential donors

Project Idea Notes on Different Hot-spots
with Rank (local level highlighting vulnerability
and communities)

II.b. Development of Full Project Design Document

Key Questions

- How to reduce exposure of the sector and communities to the problems?
- How to reduce sensitivity of the sector and communities to the problems?
- How to improve adaptive capacity of community?
- How to improve institutional capacity?

Key Tasks

- Preparation of village and household profile (disaggregated for gender and age)
- Assess impacts on livelihoods assets primarily on sources of income and settlement
- Assess existing mechanism to deal with problems
- Assessment of needs including technologies for adaptation for future
- Prepare Project Design Document using format
- Sharing with potential donors and also existing funding partners of the Project Owner

Tools

- Questionnaire survey for village and household profile (see format)
- Participatory hazard and social mapping (transact walk, participatory mapping)
- Participatory vulnerability and need assessment (FGD and consultation workshop- key questions)
- Format of Project Design Document (see format)
- Meeting with donors

Full Project Design Document

Phase II: Project Design

Summary Outputs of Phase II

Full Project Design Document



**Inputs for Implementation
and Monitoring**

Project Design Document
(addressing vulnerability of the
communities at local level/villages)



Phase III: Implementation



Implementation of Project Activities

- Implementation of different types of activities as identified in the design phase
- Activities will vary by livelihood groups but some activities will be common such as capacity building



Phase IV: Monitoring and Evaluation



Key Questions

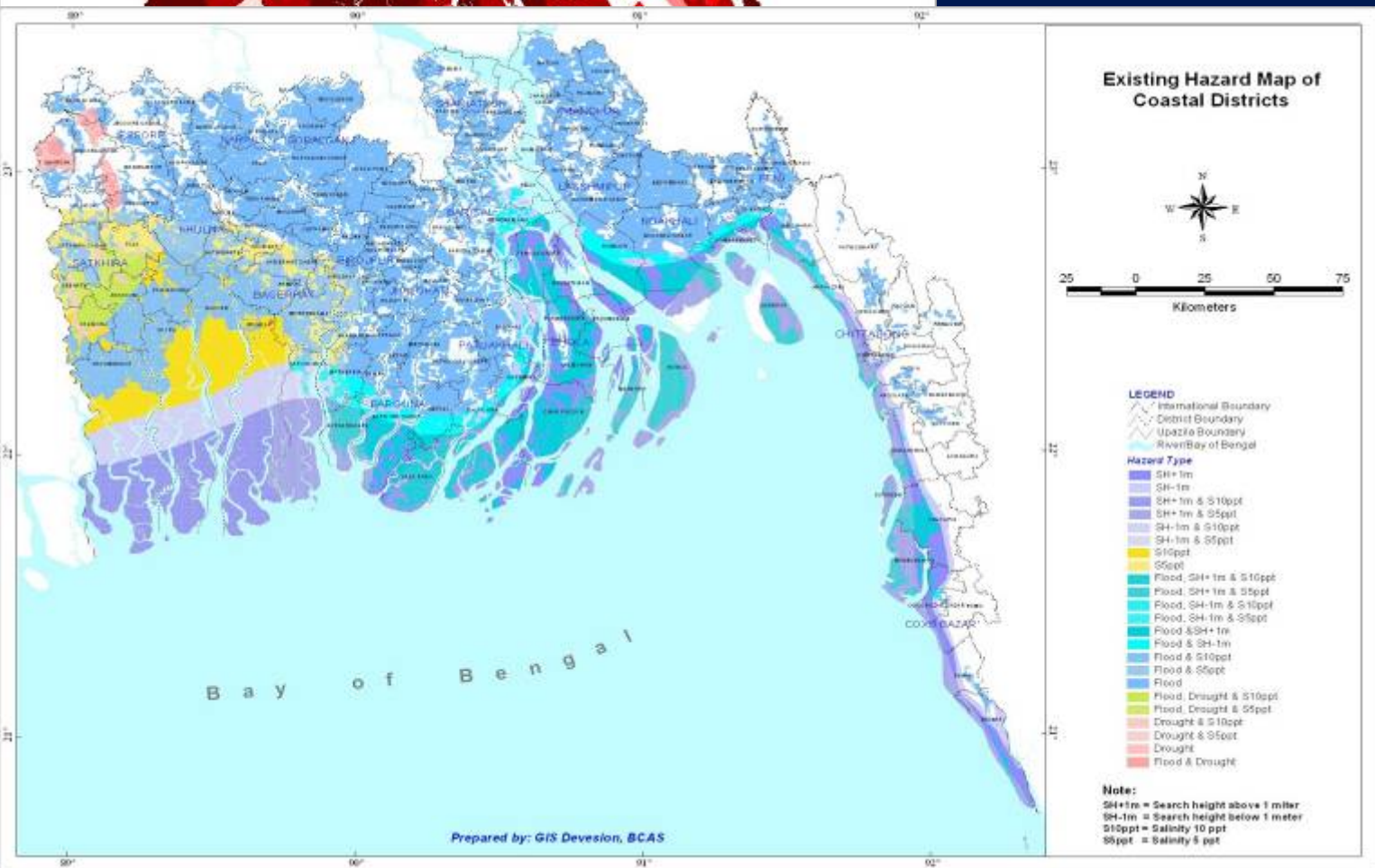
- What changes and benefits achieved from different project activities compared to the pre-project baseline?

Tools

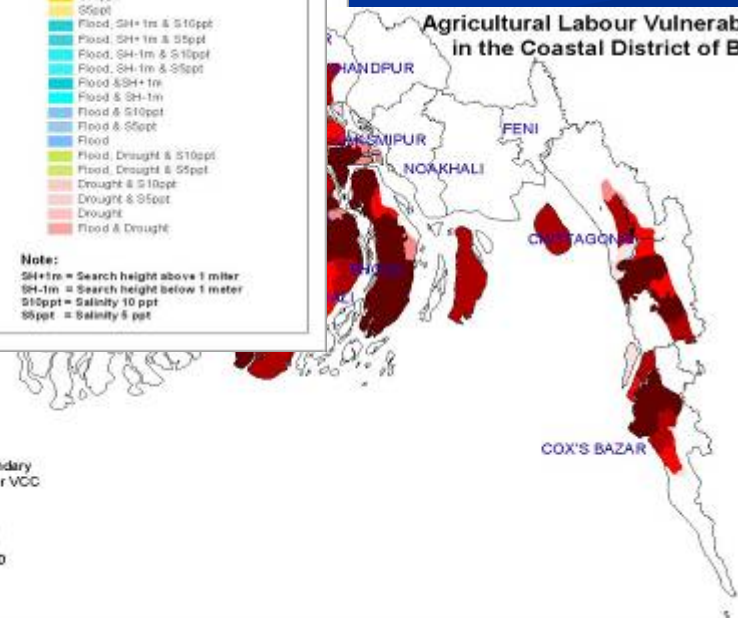
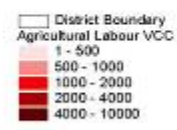
- Participatory Monitoring and Evaluation

Key Indicators

- Diversification of livelihood options
- Impacts on sources of income reduced
- Awareness increased
- Training provided
- Etc



Agricultural Labour Vulnerable to Drought in the Coastal District of Bangladesh



This methodology is developed under the SouthSouthNorth Project to assist organizations working at local level to design and implement Community Based Adaptation (CBA) project to climate change. This methodology has been applied in six countries initially know as SouthSouthNorth Adaptation Project Protocol (SSNAPP) to learn applicability of this approach (Alam and Mqadi, 2006). It has four phases i.e. identification phase, design phase, implementation phase, and monitoring and evaluation phase.

Thank You